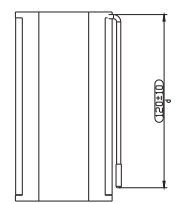
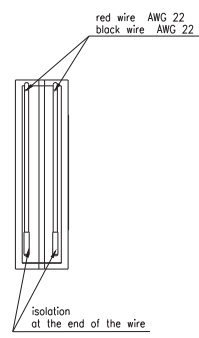
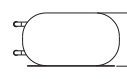
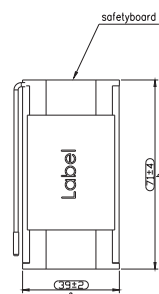
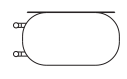


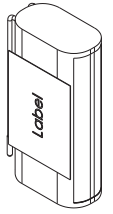
This drawing is a technical drawing and is not a photograph. It is not to be used for manufacturing purposes without the approval of the manufacturer. The manufacturer is not responsible for any damage or injury caused by the use of this drawing.

**Technische Daten/ technical data**  
**Chemie/ chemistry**  
**Zellenanzahl/ no. of cells**  
**Kapazität/ capacity**  
**Innenwiderstand/ impedance**  
**Nominalspannung/ nominal voltage**  
**Standard Ladespannung/ standard charge voltage**  
**Standard Entladespannung/ standard discharge voltage**  
**Nomineller Ladestrom/ nominal charge current**  
**Maximaler Ladestrom/ maximum charge current**  
**Ladeendstrom/ charge end current**  
**Maximaler Entladestrom/ maximum discharge current**  
**Anwendungstemperaturbereich/ ambient temperature range**  
**Selbstentladung/ self discharge**  
**Standards/**

**Technische Daten/ technical data**  
**Überladeschutzspannung/ over charge voltage detection**  
**Wiedereinschaltspannung/ over charge release voltage**  
**Entladeabschaltspannung/ over discharge detection voltage**  
**Wiedereinschaltspannung/ over discharge release voltage**  
**Nomineller Lade/Entladestrom/ nominal operating current**  
**Entlade Abschaltstrom/ discharge cut off current**  
**Kurzschlusschutz/ short circuit protection**  
**Temperaturschalter/ temperature switch**  
**MOSFET**  
**Rückstellkriterium/ release condition**  
**Nettogewicht/ net weight**  
**Leiterplattenmaterial/ pcb material**  
**Standards**



batterypack covered with 1 layer of blue shrinktube



Part Number	SAP Description
2447-3030-03	Li-Ion-7.2V-2600mAh-2S1P-M26
2447-3030-203	Li-Ion-7.2V-2600mAh-2S1P-M26/UK

Allowable deviation general tolerances	Surface:	Material:	Weight
DIN ISO 2768-m		Scale (DIN A2): 1:1	1
Drawn by: ZLR/319	Date: MEI	Projection method:	
Changed by:		Product name:	
V4 standards updated	01.06.2019	DS	
V3 change request: DE-20-2013	16.03.2019	MSE	
V2 change request: DE-20-2013	01.02.2019	MSE	
V1 part number overview added	15.04.2018	DS	
Version Change	Date	Name	

Part number: 2447-3030-X03	Project: IS-00422
Application range for inquiry: AN-1S-2013-00422	Sheet 1/1

